

PARTNERSHIP FOR
OUR
WORKING COAST

Putting Public-Private Partnerships to Work...

Supporting the Working Coast



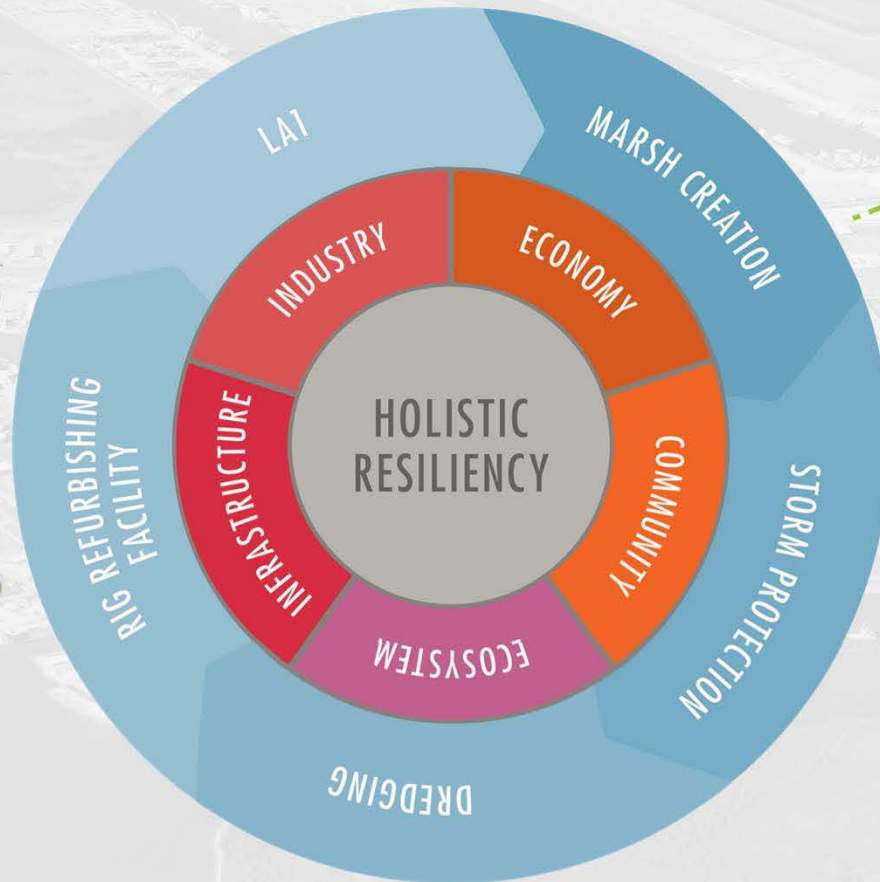


www.portfourchon.com

Holistic Resiliency

THREATS

- STORMS
- SUBSIDENCE
- LAND LOSS
- LOSS OF NATIONAL ENERGY RESILIENCE



Mitigation and Restoration

An aerial photograph showing a vast, complex waterway system. The water is a deep blue, and the surrounding land is a mix of brown and green, indicating a mix of marshland and open land. The waterway is divided into many smaller sections by narrow channels and islands. In the distance, some buildings and infrastructure are visible on the horizon.

1999

At Port Fourchon, mitigation is done in a way which restores the historic landscape.

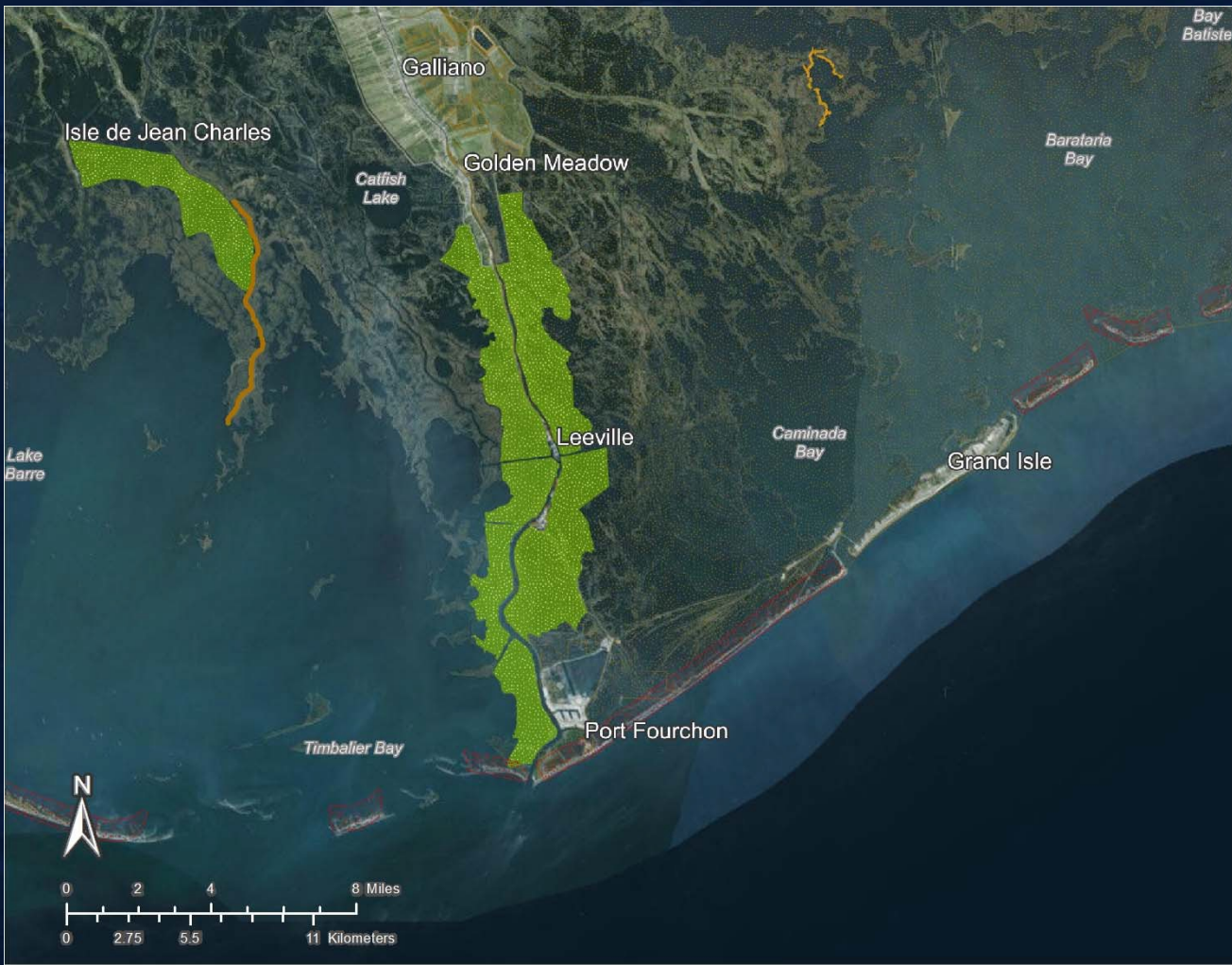
Green Infrastructure = Resiliency

An aerial photograph showing a large-scale port expansion project. On the left, a newly developed industrial area with several large white warehouse-like buildings and various pieces of machinery is situated along a waterway. To the right, a vast, green, marshy landscape with a complex network of narrow water channels (cheniere ridges) is visible, representing restored wetlands. The background shows a wide expanse of water under a clear blue sky.

This once vibrant marsh and cheniere ridge platform had degraded in to open water, and through the mitigation works completed in conjunction with the expansion of the Port, nearly 1,000 acres of wetlands have been restored to the landscape to date.

2017

Landscapes Level Restoration: *LA Coastal Master Plan*



Louisiana's State Coastal Master Plan

- 50 year, \$50 Billion Ecosystem Level
- Over \$300 M committed or constructed in vicinity of Port Fourchon under 2012 plan
- Redrawn every 5 years
- Approved by Legislature
- All LA enviro \$ from Deepwater Horizon are dedicated to Master Plan projects

Deepwater Draft s203 Feasibility Study

- Deepen Belle Pass to -50'
- Deepen Bayou Lafourche, Flotation Canal, Northern Expansion to -30'
- Purpose-built Deepwater Rig Repair and Refurbishment
- ~20M cubic yards of fill construction

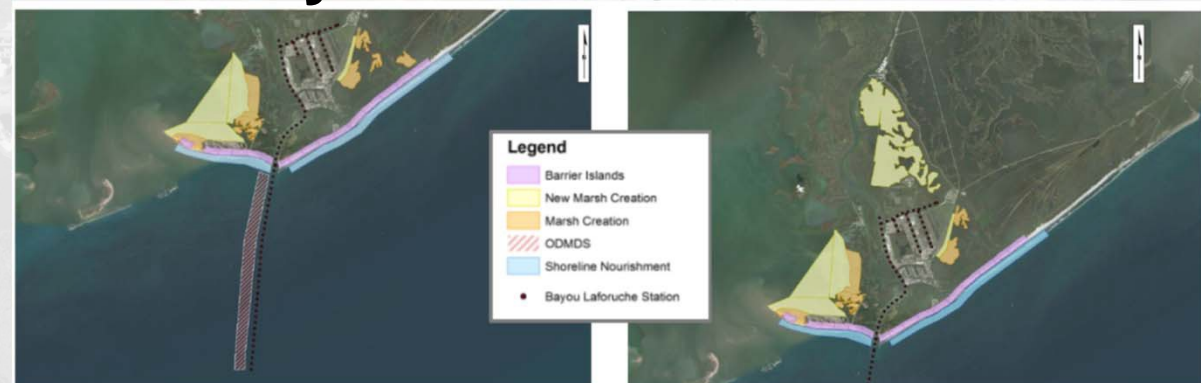
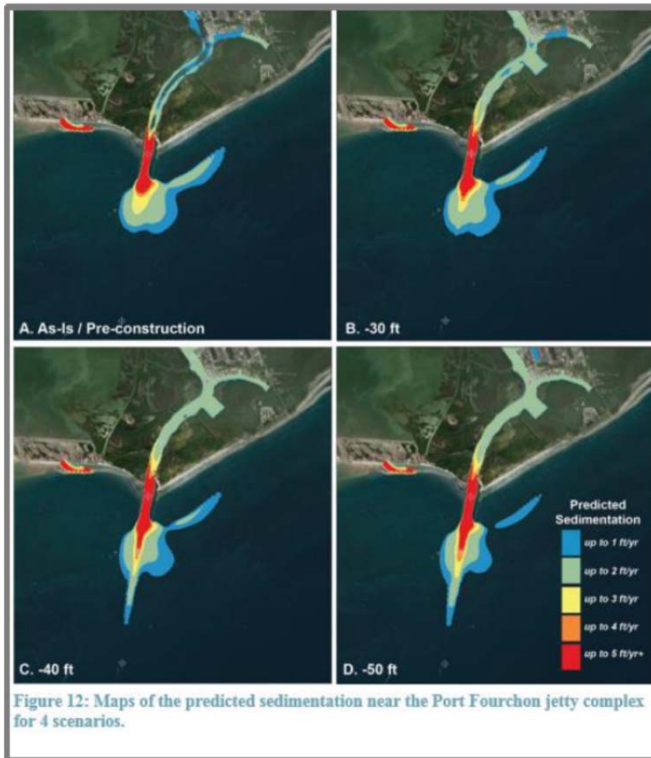




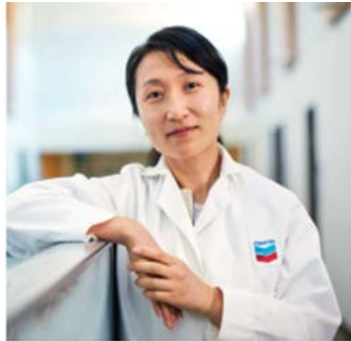
- Public-private partnership brings together industry and port with *The Water Institute of the Gulf*
- Driven by industry partners with the vision of protecting and growing America's Energy Infrastructure by beneficially using dredge materials
- Science expertise at the Institute used to plan for best placement of dredge material to provide maximum protection for critical infrastructure using world-class science

Cutting Edge Science

- TWI is utilizing Delft3D and other modelling to assist s203 project team with:
 - Sedimentation modelling
 - Beneficial use of dredge materials placement
 - WVA analysis



The Chevron Way



vision

At the heart of The Chevron Way is our vision ... to be *the* global energy company most admired for its people, partnership and performance.



getting results the right way

Find out more at:
<http://chevronway.chevron.com>

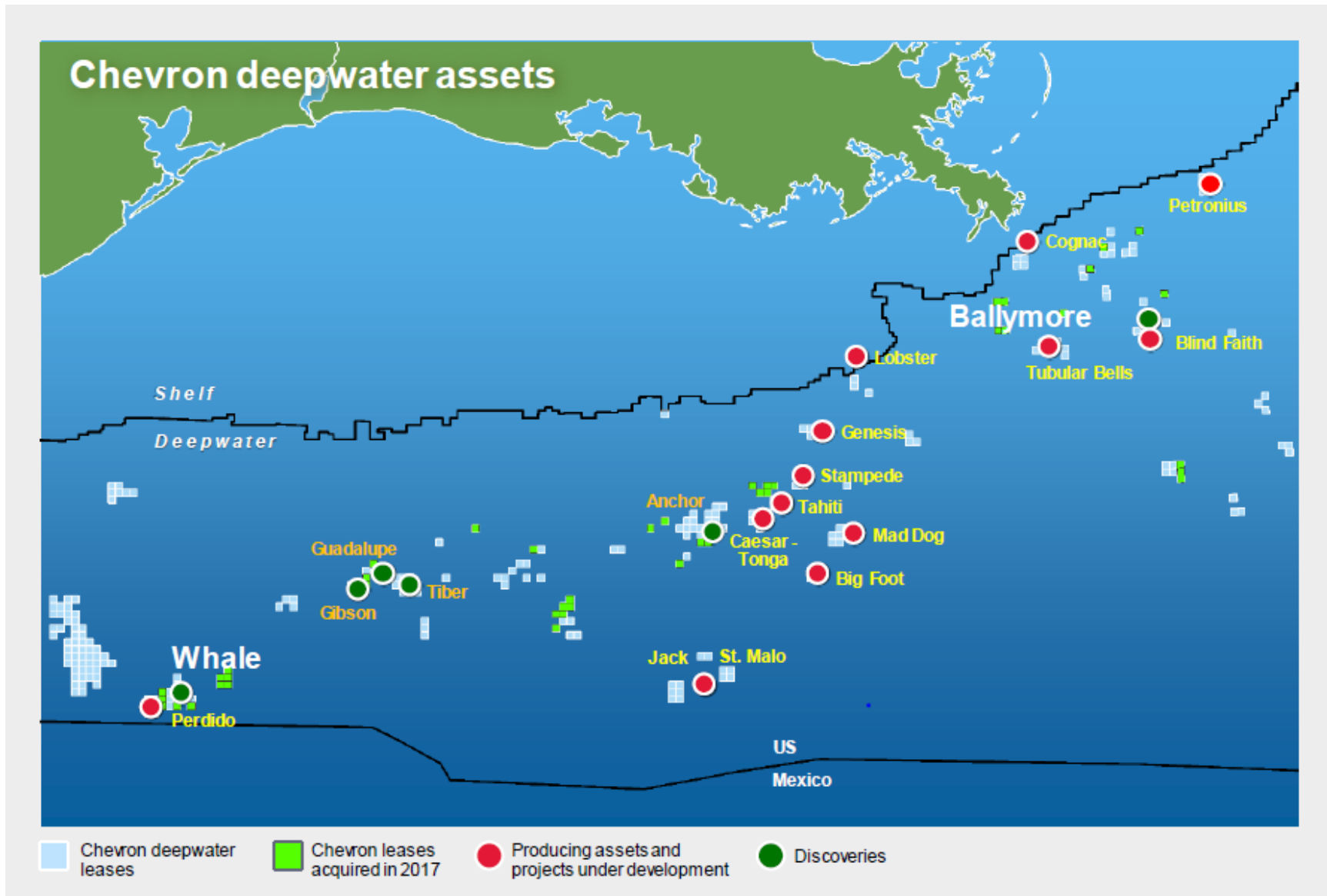


enabling human progress

We develop the energy that improves lives and powers the world forward.



Chevron in the Gulf of Mexico Business Objectives



Chevron in the Gulf of Mexico

Social Objectives



Health & Social Well-Being

Contribute to the reduction of the main causes of mortality by promoting healthy quality of life among children and the elderly and providing access to nutritious food.



Education

Improve and expand access to quality hands-on STEM education for at-risk youth driving workforce and post-secondary readiness.



Economic Development

Support programs that positively impact local jobs, income, or livelihoods and create opportunities for local minority owned and small businesses; promote tourism and culture.



Environment

Increase Chevron's participation and visibility in public-private partnerships that support coastal restoration projects and land-loss issues in coastal parishes.



Approach to Environmental Stewardship

Participation in public-private partnerships

Alignment with Louisiana's Coastal Master Plan

Identify
environmental
issues / challenges

Collaborate
with strong,
knowledgeable and
experienced partners

Execute
with clear milestones,
tangible results, and a
focus on sustainability

Measure
performance with
high quality data
and share lessons
learned




Commitment to the Environment

Partner	Environmental Initiatives:	Partner	Educational Initiatives:
Louisiana Nature Conservancy	<ul style="list-style-type: none"> Oyster reef preservation Coastal restoration and monitoring Restoration and monitoring Vermillion Bay, Grand Isle and St. Bernard Parish 	Audubon Nature Institute	<ul style="list-style-type: none"> Live Oak Tree Program planted of 22 oak trees. AquaVan –brings the Audubon Aquarium to schools.
Restore and Retreat	<ul style="list-style-type: none"> Expand advocacy and outreach Preserve coast, community & culture Coastal restoration projects(Terrebonne and Barataria Basins) 	South Louisiana Wetlands Discovery Center	<ul style="list-style-type: none"> Youth Summit World Wetlands Day “iRestore” Media Literacy program Vanishing Points Website
The Water Institute	<ul style="list-style-type: none"> Two projects in Port Fourchon Enhance coastal habitats Protect infrastructure and communities 	LSU Coastal Sustainability Studio	<ul style="list-style-type: none"> Problem solving for critical coastal issues Louisiana Community Resilience Institute Resiliency design, advocacy and project assistance planning
Woodlands Conservancy	<ul style="list-style-type: none"> "Seeds to Saplings" environmental education program Value of watersheds and forested wetlands Restoration planting in an "outdoor classroom" 	Ducks Unlimited	<ul style="list-style-type: none"> installation of small water control structures Rice Stewardship Program conservation - 81,000 acres of rice lands Restore/maintain waterfowl habitats 25 million birds that migrate through SW LA.
America’s Wetland Foundation	<ul style="list-style-type: none"> Collaborate on Louisiana coastal issues Gulf Intracoastal Waterway Shoreline Stabilization and Restoration Project in Lafourche Parish 	New Orleans Geological Society	<ul style="list-style-type: none"> Graduate level research projects Predictive land loss models Surface fault traces
Coastal Conservation Association	<ul style="list-style-type: none"> Support coastal restoration and protect marine fisheries habitat Construction of West End artificial reef and fishing pier in Orleans Parish Reef enhancements at Red Fish Pointe (Vermilion Bay) and Point Mast (Terrebonne Bay) 		
Louisiana Department of Wildlife and Fisheries and Foundation	<ul style="list-style-type: none"> Whooping crane repopulation program 		



Social Investment





home register  help support Log in

chevron gulf of mexico business unit

policy, government and public affairs proposal request guidance

In the Gulf of Mexico Business Unit, we are guided by our vision to be the energy company most admired for our people, partnership and performance.


We support organizations, programs and events which reinforce our business and social investment focus areas.


-  Health & Social Well-Being
-  Education
-  Economic Development
-  Environment

Only requests for the Gulf of Mexico (GOM) region will be considered.

[Register to submit a Sponsorship Proposal.](#)

Once a proposal is submitted, the review period typically lasts up to four (4) weeks. You will be notified via email on the status of your request and can also track the status by logging into your account.

 conxport © 2011-2015 Conxco®, LLC. All Rights Reserved.






chevron gulf of mexico business unit

2017 social investment report

human energy™



<http://www.gomsocialinvestmentreport.com>

<https://gomsportal.com>

Social Investment Focus Areas



Environment



Economic Development



Education



Health & Social Well-Being



Thank You





Partnerships towards Solutions

Ian Voparil

Business Impact & Continuity Manager – Gulf of Mexico, Upstream Deepwater

Shell in US and Louisiana

INTERESTS IN  **50 STATES**
 EMPLOYING MORE THAN
17,900 PEOPLE
 OPERATING IN MORE THAN
70 COUNTRIES & TERRITORIES 
 EMPLOYING OVER
86,000 PEOPLE

STAFF COUNTS

2017	
Employees	4,230
Pensioners	4,011

SOCIAL INVESTMENT

2015-2017	
Social Investment	\$13.8 million
Education	\$2.5 million
Conservation	\$3.7 million

PROCUREMENT

2017	
Procurement Spend	\$1.55 billion
- SWMBE*	\$260.8 million

*Small-Women-Minority Business Enterprises

TAX

2017	
State Income Tax (2016)	\$14.8 million
Franchise Tax (2016)	\$9.7 million
Royalties	\$120,000
Severance Tax	\$10.8 million
Motor Fuels Tax*	\$64.3 million
Environmental Fee	\$185,000
Sales and Use Tax*	\$48.5 million
Property Tax	\$79.7 million
Total	\$228.5 million

664 STATE-BASED SUPPLIERS

128 SMALL-WOMEN-MINORITY BUSINESS ENTERPRISES



 = 6 Suppliers

RESEARCH AND DEVELOPMENT

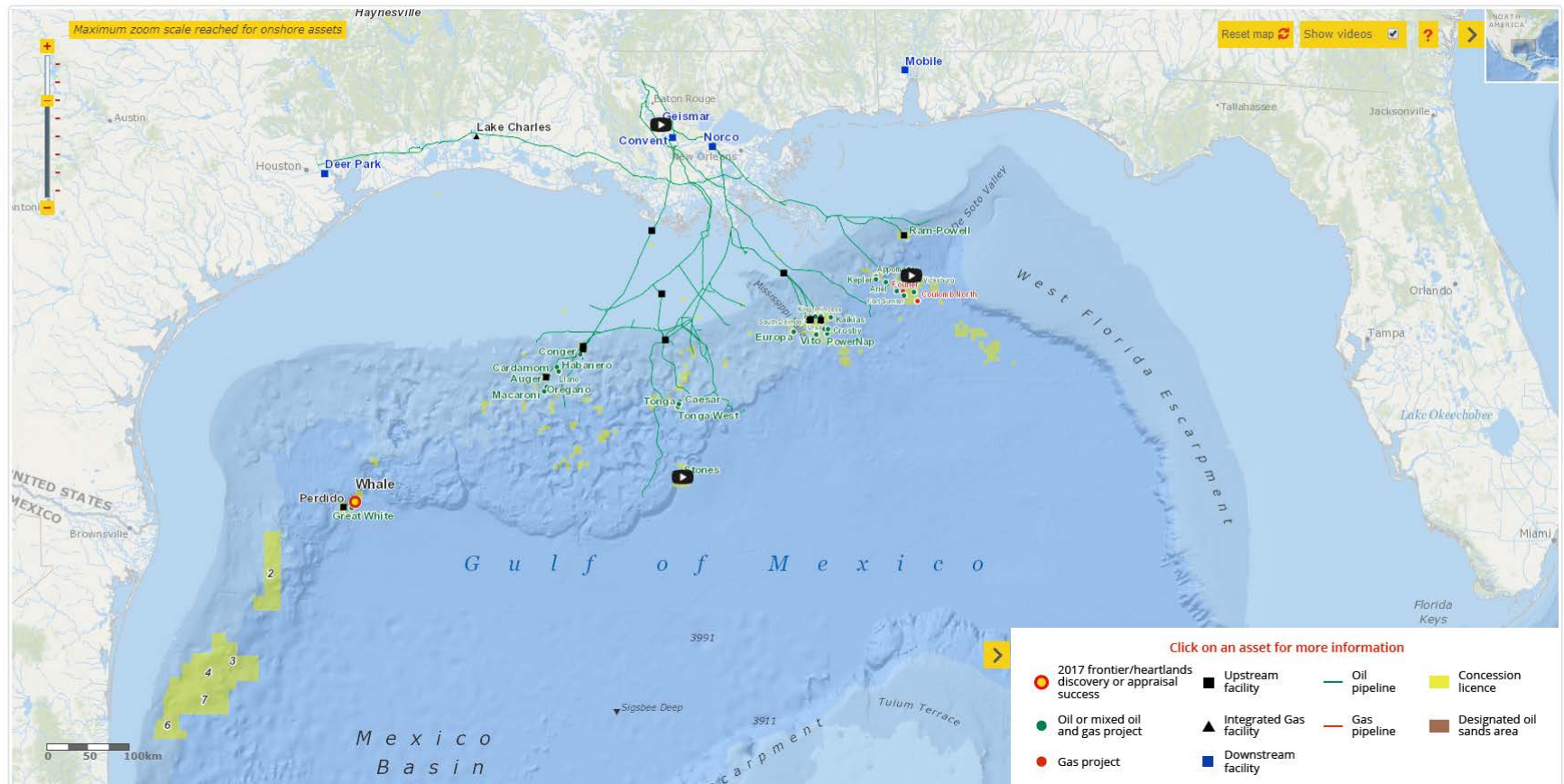
2017	
Universities and other research partners	\$9.1 million



SHELL INTERACTIVE MAP 2017

- Shell assets & projects
- New discoveries 2017
- Key projects under construction
- Downstream facilities

Search map for Shell assets and projects









PHASE 1 ACTIVITIES

- Optimizing Beneficial Use of Dredge Materials
 - Sediment availability and preliminary site selection
- Subsidence Impact
 - Literature review and identified data gaps
- Blue Carbon
 - Examined feasibility of generating potential carbon credits

